

# Let the Music Play

A tribute to music from the 50's, 60's and 70's

**An NGC Standard Flower Show**

Presented by the Virginia Federation of Garden Clubs, Inc.

**May 21, 2024**

1:00 PM to 4:00 PM

**May 22, 2024**

9:00 AM to 1:00 PM

Boar's Head Resort • 200 Ednam Dr, Charlottesville, VA

Open & Free to the Public



Affiliated with:  
National Garden Clubs, Inc.  
South Atlantic Region

# *Let the Music Play*

## **Table of Contents**

Table of Contents.....	Page 1
Committee Chairmen .....	Page 2
General Rules.....	Page 3
Standard System of Awarding.....	Page 4
NGC Top Exhibitor Awards being offered.....	Page 4
Division I Horticulture	
Division I Rules .....	Page 5
Section and Classes.....	Page 6-7
Division II Design	
Division II Rules .....	Page 8
Sections and Classes/Exhibits.....	Page 9
Division III Education	
Division III Rules .....	Page 10
Exhibits .....	Page 11

# *Let the Music Play*

## **Flower Show Committee**

VFGC President	Val Story	540-272-0975
General Chairman	Pat Carswell	540-222-3948
Schedule	Pat Carswell	540-222-3948
Signage	Joanne Wallace	804-683-9006
Design Entries & Placement Design Classification	Michael Rider	540-923-4334
Horticulture Entries & Placement Horticulture Classification	Pam Lamborne	540-323-5270
Education Entries	Janice Clem	540-309-5596
Judges Chairman	Jane Earle	804-310-6808
Clerks Chairman	Grace Morris	540-447-0042
Awards Chairman	Val Story	540-272-0975

# Let the Music Play

## GENERAL RULES

1. This Small Standard Flower Show conforms to the standards established by the National Garden Clubs, Inc. (NGC). The standards are in the *Handbook for Flower Show* (HB) 2017 Edition, with revisions printed in *The National Gardener* (TNG) and online at the NGC website. The Schedule is the law of the Show, and the HB is the final authority.
2. Open to any VFGC members.
3. Entry cards are available before and on May 21, 2024 or by calling the Entries Chairman or from the General Chairman as follows:

Design Entry Chairman	Michael Rider	540-923-4334
Horticulture Entry Chairman	Pam Lamborne	540-323-5270
General Chairman	Pat Carswell	540-222-3948
4. Entry Cards are to be filled out in advance (Typed, or in waterproof ink, or in pencil. Address labels may be used).
5. Exhibitors are required to bring a list of all plant material with the required entry card information on May 21, 2024.
6. Entries will be received on May 21, 2024 from 8:30 to 10:00 AM in Pavilion 3 of The Boar's Head Resort.
7. Entries must be removed between 2:00-3:00 PM on May 22, 2024.
8. Judging will begin at 10:30 AM on May 21, 2024.
9. The Classification Chairmen for each division check exhibits for conformity to the schedule prior to judging. Final determination for conformance is the judges' responsibility.
10. The General Chairman and the Classification Chairman for each division are available during judging for possible consultations. They, along with the judges and clerks, are the only personnel allowed on the floor during judging.
11. The decisions of the judges are final. Awards may be withheld if not merited.
12. There must be an emphasis on FRESH plant material. No artificial plant material is permitted in any exhibit in any division.
13. Each exhibitor is limited to one entry per class, except in the Horticulture Division.
14. The Virginia Federation of Garden Clubs, Inc. will strive to assure the safety of all items after arrival and placement, but is not responsible for any loss or damage to exhibits.
15. Plants listed on the Virginia Conservation List of Native Plants Needing Protection in Virginia may only be used in the Special Exhibits Division if obtained in a legal manner and labeled with botanical and common names; if used in the Horticulture Division, the plant must have been grown by the exhibitor and labeled accordingly; if used in the Design Division, the plant must have been grown by the exhibitor or obtained in a legal manner. The List of Plants on the Conservation List is available on the VFGC website.

# Let the Music Play

## Awards

**The NGC Standard System of Awarding (HB p.5) is used in all divisions.**

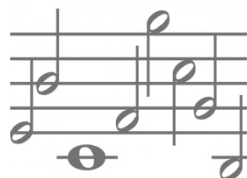
1. Only one (1) first-place (blue) ribbon per class or subclass; must score 90 points or more.
2. Only one (1) second-place (red) ribbon per class or subclass; must score 85 points or more.
3. Only one (1) third-place (yellow) ribbon per class or subclass; must score 80 points or more.
4. One (1) or more Honorable Mention (white) ribbons as merited; must score 75 points or more.

### **Horticulture Awards, Division I:**

- a. Award of Horticulture Excellence is offered to the highest scoring blue ribbon winner and correctly named exhibit in the Horticulture Division, Sections A - C. Rosette of green, orange and blue ribbons.
- b. Award of Merit will be offered to the highest scoring blue ribbon winner, correctly named exhibit in the Bulbs Section, Section A, and in the Perennials Section, Section B. Rosette of orange ribbons.
- c. The Grower's Choice Award will be offered to the highest scoring blue ribbon winner, correctly named exhibit in the Succulents Section, Section C. Rosette of dark green ribbons.

### **Design Awards, Division II:**

- a. Award of Design Excellence is offered to the highest scoring blue ribbon exhibit, scoring 95 or above, entered by an individual in the entire Design Division. Rosette of Gold Ribbons.
- b. Two (2) Designer's Choice Awards will be offered to the highest scoring blue ribbon exhibit in each section of the Design Division, Sections A and B. Rosette of purple ribbons.



# *Let the Music Play*

## **DIVISION I HORTICULTURE RULES**

1. The NGC Exhibit Policies are printed in the Handbook for Flower Shows, Chapter 6, Exhibiting in the Horticulture Division.
2. The rules for a single species cut or container-grown specimen are listed in the Handbook for Flower Shows or its supplement Horticulture Exhibiting and Judging.
3. In order to receive an NGC Top Exhibitor Award, the exhibitor must identify her/his entry by its binomial name or currently acceptable scientific designation.
4. Entry cards are to be filled out in advance, if possible, with waterproof ink, labels, or pencil.
5. Cut specimens should not have foliage below the water line, except for Gladiolus.
6. If a plant is considered a flowering plant, it should be exhibited as a flowering specimen. Foliage plants may flower, but should be exhibited as foliage plant if they are grown for their leaves.
7. Specimens with a class designation in the schedule may not be entered in the 'Any Other Worthy Class.'
8. The Horticulture Classification Committee Chairman and/or General Show Chairman are free to subdivide classes by color, form, size, cultivar, variety or other distinguishing characteristics.
9. The Scales of Points for Horticulture are located in Chapter 14 of the Handbook for Flower Shows.
10. Horticulture containers must be furnished by the exhibitor and should be clear glass.
11. Wedging must be furnished by the exhibitor and should be clear plastic wrap or bubble wrap.

# Let the Music Play

## HORTICULTURE SECTIONS & CLASSES DIVISION I – “A Little Bit Country...”

**Section A – Bulbs, Corms & Tubers – “Love Me Tender”** (Elvis Presley, 1956)  
Cut specimens only. Eligible for the Award of Merit with a score of 95 or above.

Class 1: *Allium*

Class 2: *Iris*

Class 3: *Lilium* (Lily)

Class 4: Any other worthy named bulb, corm or tuber

**Section B – Perennials – “Hey, Good Lookin”** (Hank Williams, 1951)  
Cut specimens only. Eligible for the Award of Merit with a score of 95 or above.

Class 5: *Aquilegia* (Columbine)

Class 6: *Paeonia* (Peony)

Class 7: *Polygonatum* (Solomon’s Seal)

Class 8: Any other worthy named perennial

**Section C – Succulents, Container Grown – “Act Naturally”** (Buck Owens, 1963)

Container Grown Plants with the container limited to 10” across the top. Plants may be double potted but inner pot must be hidden. May be single, multiple, or self-multiple plantings of the same genus in the pot – no combinations. No top dressing, such as moss allowed. Eligible for Grower’s Choice Award, with a score 95 or above.

Class 9: *Dracena* (Sanseveria)

Class 10: *Echiveria*

Class 11: *Kalanchoe*

Class 12: Other Named Worthy Container Succulents



# Let the Music Play

## DIVISION II – DESIGN RULES

1. The NGC Exhibit Policies are printed in the *Handbook for Flower Shows*, Chapter 7, Exhibiting in the Design Division, NGC Policies and Guidelines, pp.79-80.
  - a. Some plant material must be used in every exhibit. This includes fresh and/or dried plant material.
  - b. Exhibitor may enter one or more designs in this Flower Show, but only one per class.
  - c. The exhibit entered into competition must be the work of one exhibitor, and the exhibitor's name must appear on the entry card; common exceptions are Club Competition and Companion Design Classes.
  - d. If the designer is unable to fulfill an assignment it is the designer's responsibility to provide a substitute.
  - e. If the designer is unavailable to transport and/or set up the completed design, a substitute may enter the exhibit for the designer. The designer may receive exhibiting credit if needed. (Permitted only for completed designs.)
  - f. A single flower is not a design. Container grown plants are fresh plant material and are permitted in the Design Division where appropriate, but are never considered a floral design are not considered acceptable in the Design Division.
  - g. Landscapes, scenes, or anything representing an actual item of clothing, person, animal etc. are not considered acceptable in the Design Division.
  - h. Religious symbols used in a design must be displayed in a respectful manner.
  - i. When design techniques are required they must be listed on a card.
2. Advanced registration with the Design Chairman, Michael Rider, is required by May 10, 2024.
3. Plant material and non-plant material permitted and not permitted in the Design Division are printed in the *Handbook for Flower Shows*, Chapter 7, pp.80-81.
4. All plant material used in the design must be identified on a 3" x 5" card, provided by the exhibitor and included with the entry tag.
5. The exhibitor is required to conform to the stated description and limitations of the Design Type named in the class.
6. Rules for *Design Types, Advanced Design Types, Table Designs and Table Appointments* are printed in the *Handbook for Flower Shows*, Chapter 7.
7. Designer is on his/her honor that the design being entered has not been previously entered or judged in an NGC Standard Flower Show.
8. The Scale of Points for all Designs is listed in the *Handbook for Flower Shows*, Chapter 14, p.130.



# Let the Music Play

## DIVISION II – DESIGN SECTIONS & CLASSES “A Little Bit Rock and Roll”

**Section A – “Sweet Caroline, Good Times Never Seemed So Good”** (Neil Diamond, 1969)

Eligible for the Designer’s Choice Award with a score of 95 or above. Fresh and/or dried materials are allowed.

**Class 1 – “Both Sides Now”** (Joni Mitchell, 1968) – Side 1 of Duo design to be staged on a high-top table draped with white tablecloth, 36” diameter and 40” in height.

**Class 2 – “Stuck in the Middle with You”** (Stealers Wheel, 1973) – Parallel Design to be staged on a table with a white table cloth. Allowed dimensions are 40” H x 30” W x 20” D. Staging panel required and provided by designer. Background walls are beige.

**Class 3 – “Hit the Road, Jack”** (Ray Charles, 1961) – Designer’s Choice of Creative Design using all “foraged flora” and staged on a table with a white table cloth. Allowed dimensions are 40” H x 30” W x 20” D. Staging panel required and provided by designer. Background walls are beige.



# Let the Music Play

## **Section B – “Respect”** (Aretha Franklin, 1967)

Eligible for the Designer’s Choice Award with a score of 95 or above. Fresh and/or dried materials are allowed.

**Class 4 – “Clouds”** (Joni Mitchell, 1968) – Side 2 of Duo Design to be staged on a high-top table draped with white tablecloth, 36" diameter and 40" in height.

**Class 5 – “Twist & Shout”** (Beatles, 1963) – Multi-rhythmic design to be staged on a table with a white tablecloth. Allowed dimensions are 40" H X 30"W X 20"D. Staging panel required and provided by designer. Background wall is beige.

**Class 6 – “Wouldn’t It Be Nice”** (Beach Boys, 1966) – Creative Line-Mass Design to be staged on a table with a white table cloth. Allowed dimensions are 40" H x 30" W x 20" D. Staging panel required and provided by designer. Background walls are beige.

**Class 7 – “I Fall to Pieces”** (Patsy Cline, 1961) – Mono-Botanic Design staged on a table with a white table cloth. Allowed dimensions are 40" H x 30" W x 20" D. Staging panel required and provided by designer. Background walls are beige.



# Let the Music Play

## DIVISION III — EDUCATION

### Education Division Rules

1. Education Exhibits may be the work of more than one individual or organization unless a Student Judge or an Accredited Judge is seeking exhibiting credit for preparing an Education Exhibit.
2. Names of exhibitors may appear in the schedule only if the exhibits are not being judged.
3. The Educational Top Exhibitor Award is being offered. For a Standard Flower Show, the exhibit must be eighteen square feet of surface area.
4. Some plant material is required.
5. All staging information provided by the committee. The Education Exhibits will be placed on tables covered with a white tablecloth. The tables will be placed on front wall outside of the flower show room. Staging panel or niche must be used and provided by the exhibitor.
6. Advanced registration is required by April 25, 2024. Description of the exhibit is to be submitted by exhibitor.
7. Scales of Points for Education Exhibits is listed in the *Handbook for Flower Shows*, Chapter 14, p.130.



# Let the Music Play

## DIVISION III — EDUCATION “What a Wonderful World”

Section A. The Education Exhibits are eligible for Educational Top Exhibit Award. Rosette of brown and white ribbons.

### Exhibit 1. -- **“Penny Pines”**

The exhibit will show how the Penny Pines program works to reforest our nation’s lands and how your garden club can contribute.

### Exhibit 2. – **“Photographing Flowers”**

The exhibit will provide tips on the best ways to photograph and print your garden flowers and floral arrangements.

